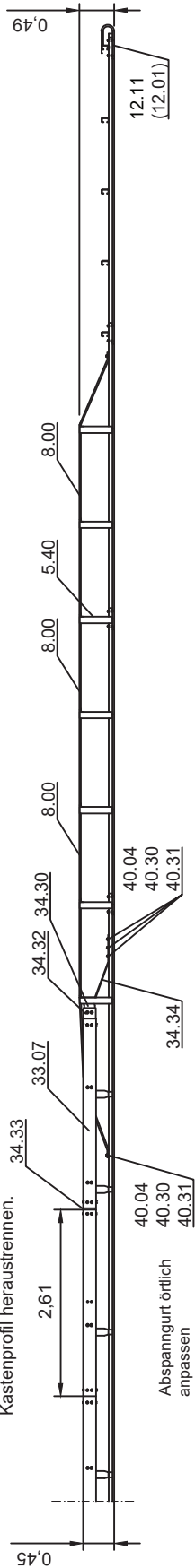
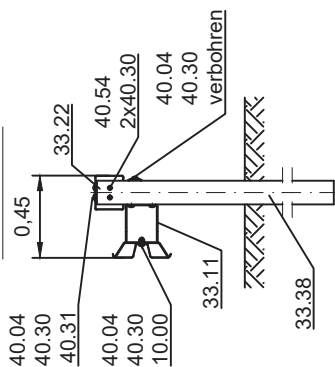


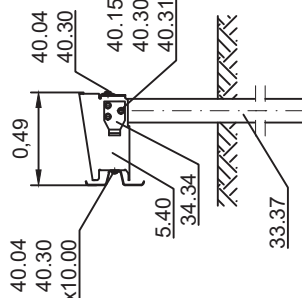
Wenn erforderlich:
Einschweißwinkel im Passstück
Kastenprofil heraustrennen.



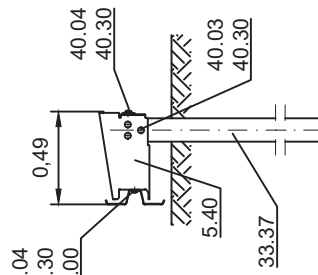
Schnitt A-A



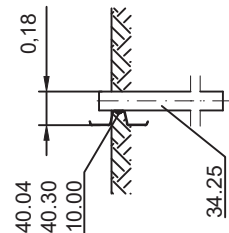
Schnitt B-B



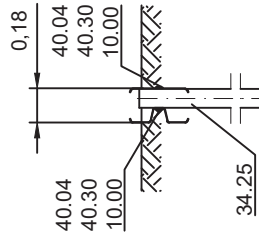
Schnitt C-C



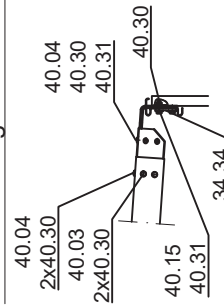
Schnitt D-D



Schnitt E-E



Verschraubung KP-Endverankerung



DIN V ENV 1317-4

P2A-x1/y1-z1-A

SUPER-RAIL Eco Absenkung 16 m

Zchg. Nr. S4.1-370

Stand: Dez. 2021

Gütemeinschaft Stahlschutzplanken e.V.