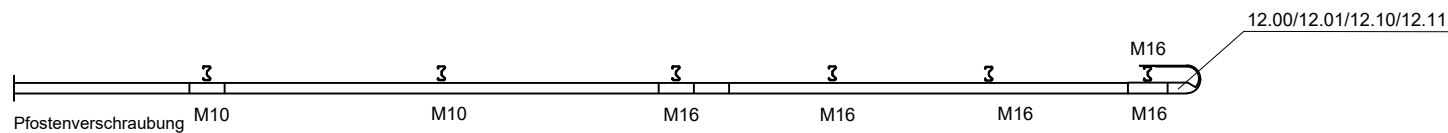
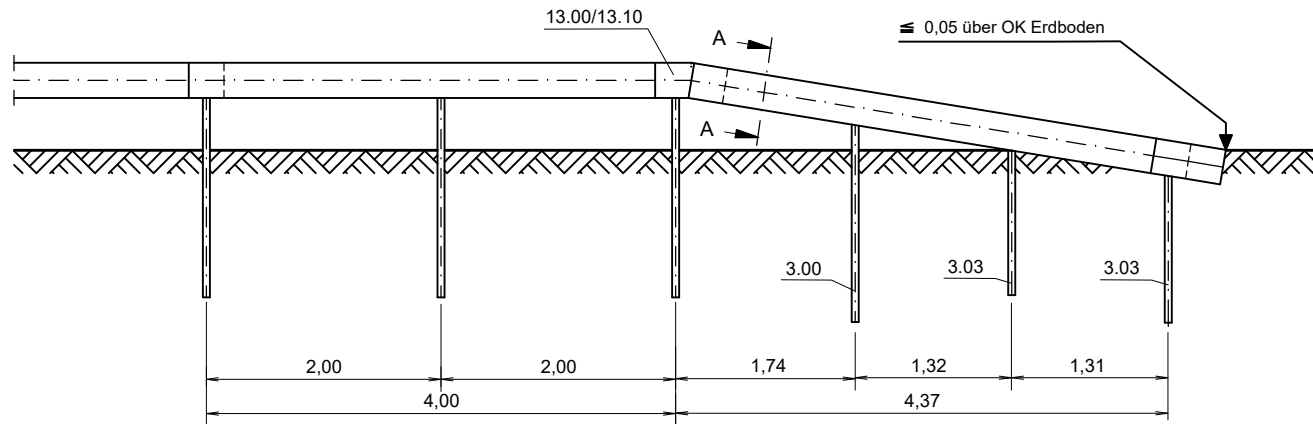
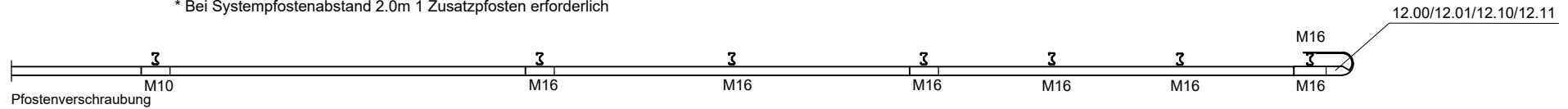
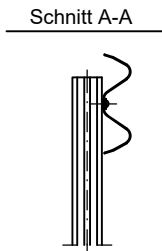
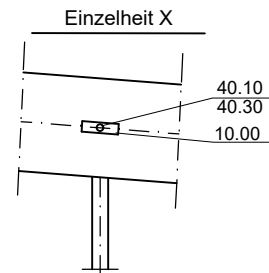


\* Bei Systempostenabstand 2.0m 1 Zusatzposten erforderlich



Profil B sinngemäß ausführen



Zchg. Nr. S4.1-110

Stand: Sept. 2019

### ESP Absenkungen

DIN V ENV 1317-4

P2A- x1/y1- Z1- A

Gütegemeinschaft Stahlschutzplatten e.V.

