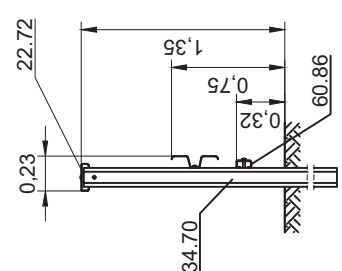
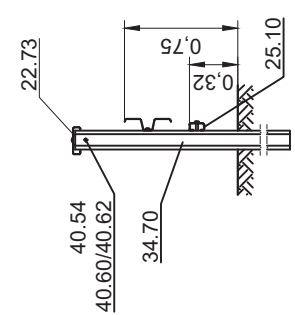


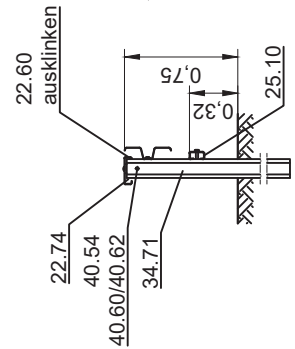
Schnitt A-A



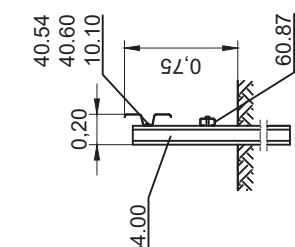
Schnitt B-B



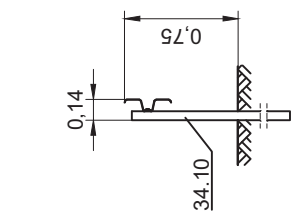
Schnitt C-C



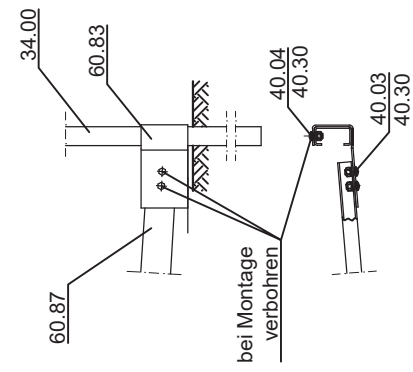
Schnitt D-D



Schnitt E-E



Detail X



Zchg. Nr. S3.1-430
Stand: Dez. 2022

Flextra von Eco-Safe auf Eco-Safe 1.33 Geländer

DIN V ENV 1317-4
H1 / L1 - W4 - B
N2 - W3 - B



Verschraubung siehe Zeichnung B1.1-104, B1.1-110 und B1.1-111
Profil A sinngemäß ausführen

Gütegemeinschaft Stahlschutzplanken e.V.